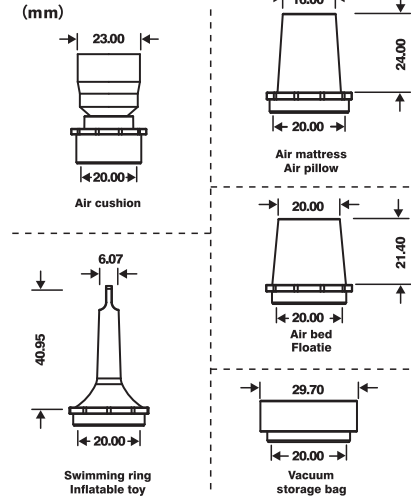




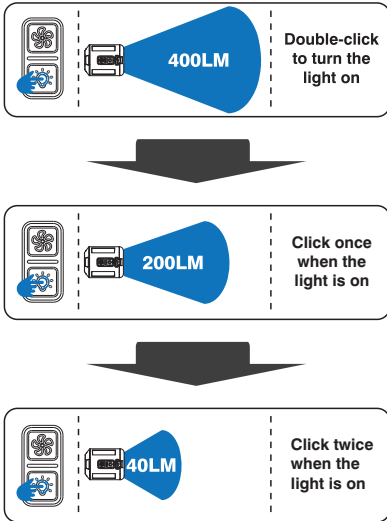
GIGA Pump 4.0

www.aerogogo.com

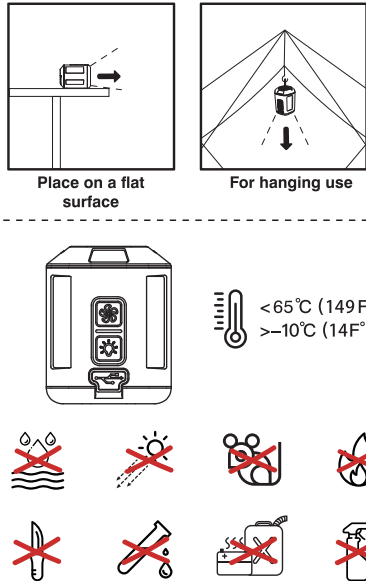
Types of Nozzles



Lantern Mode



Camping Lantern



Reminder

- If the pump is not working, please charge it and then check whether it works properly.
- If there is any water or liquid on the pump surface, wipe it before using it.
- If the airflow is weak or the rotation of turbine is abnormal, please check if the fan is jammed or blocked.
- If there is any problem when using the product, please contact the local authorized dealers or retailers. For more information, you can also send email to :service@aerogogo.com

Limited Warranty

- One-year limited warranty starts from the date of purchase.
- If the product is defective or has a problem, please contact the seller / retailer where you purchased for exchange.
- If you cannot return to the seller/retailer, please return the faulty product to us according to the return address provided.
- If service is needed due to failure of parts that are not original to the product or due to damage caused by abuse, misuse or any external cause, certain fee will be applied for maintenance.

Disclaimer

- Defects (cosmetic or incidental damages) or malfunction caused by misuse, abuse, improper storage or maintenance
- Failure to follow operating instructions, or use with equipment with which it is not intended to be used.
- Damage caused by unauthorized disassembly, alteration, modification or repair of the product.

Warning

- Do not use the pump in water
- Keep the inflation port or the deflation port clean.
- Do not put your finger into the inflation port or the deflation port.
- When the pump is working, keep your eyes away from the inflation or deflation port and avoid looking at the ports closely.
- All children under 12 must be supervised by an adult when using the pump.
- Do not look directly at the light. Do not shine the torch directly in the face. The bright lumens can damage your eyes.



All products bearing this symbol are waste electrical and electronic equipment(WEEE as in directive 2012/19/EU)which should not be mixed with unsorted household waste. Instead, you should protect human health and the environment by handing over your waste equipment to a designated collection point for the recycling of waste electrical and electronic equipment, appointed by the government or local authorities. Correct disposal and recycling will help prevent potential negative consequences environment and human health. Please contact the installer or local authorities for more information about the location as well as terms and conditions of such collection points.

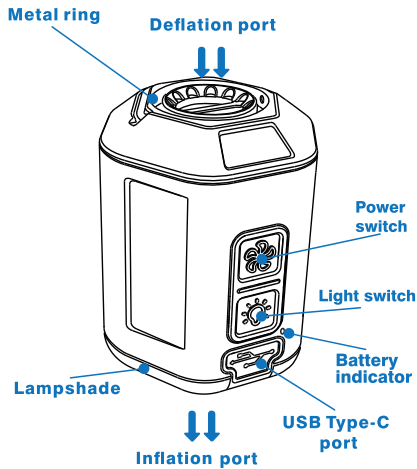


EU Declaration of Conformity
We, Shanghai MicroNovelty Co.,Ltd hereby, decl are that this equipment is in compliance with the applicable Directives and European Norms, and amendments.



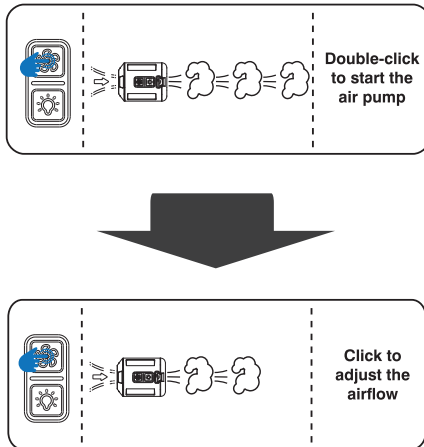
The User Manual GIGA Pump 4.0

GIGA Pump 4.0

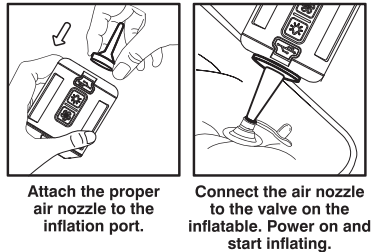


Battery indicator: A red light means the battery is 20% or less charged. The blinking green light means battery is charging, and the green light is always on when fully charged.

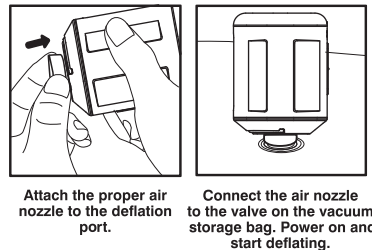
Air Pump Mode



Inflate



Vacuum Storage



Net weight	100g
Gross weight	160g
Volume	50x48x60.5mm
Inflation pressure	4.2kPa/ 2.0kPa
Flow	220L/min / 140L/min
Deflation pressure	4.2kPa/ 2.0kPa
Compression ratio	60%
Power rating	23.5W
Battery capacity	3.7V - 1300mAh
Run time	12min
Brightness	400LM/200LM/40LM
Brightness endurance	3H/6H/9H
Package contents	GIGA Pump4.0 Type-C cable Manual Storage bag Air nozzles
Standards	CE/FCC/KC/ROHS/PSE REACH

Guarantee Card

◆ Product Information

Model _____
Purchase Date _____
Color _____
Purchase Area _____

◆ Client Information

Name _____
Tel _____
E-mail _____
Address _____
Mark _____